

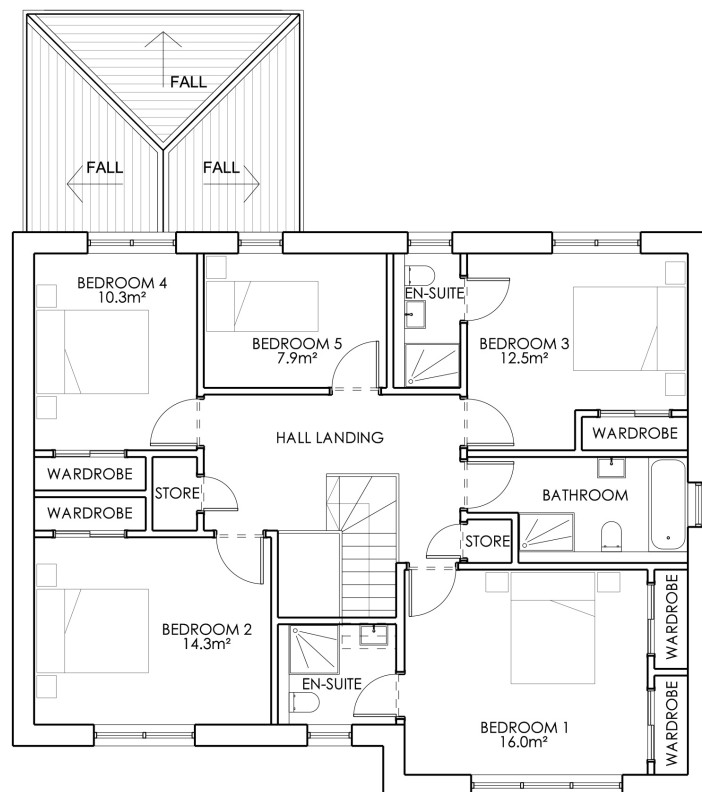
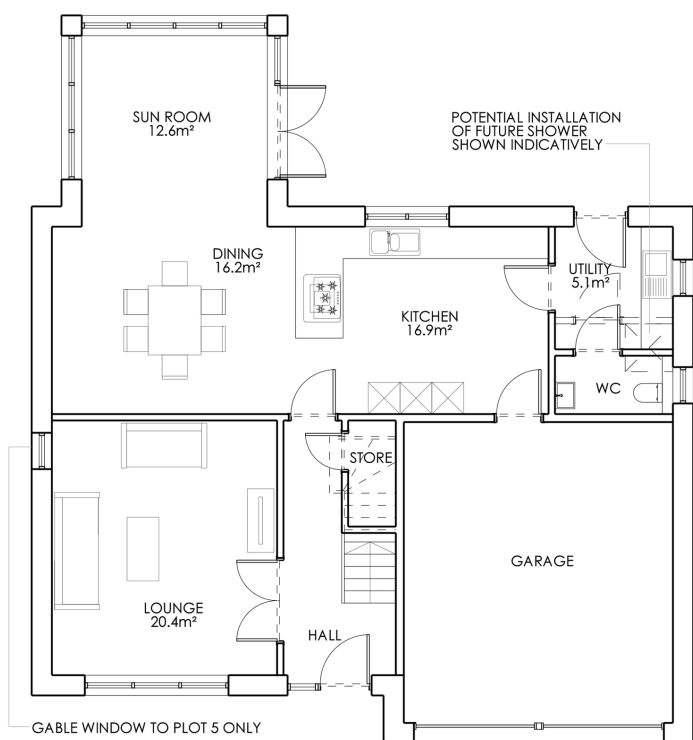
# The Lochaber

5 Bedroom detached villa with double garage & sunroom

GROUP  
*Lomond*



The impressive Lochaber is the largest of the house types. A superb home. The tone is immediately set by the contemporary design of the layout. The entrance hall gives direct access to the spacious lounge and modern, open plan, kitchen-dining-sunroom. The Utility and WC are accessed from through the kitchen. The Hall stairway guides you to the upper floor with its five double bedrooms all with fitted wardrobes and two bedrooms with en-suite facilities. The spacious family bathroom is located on this floor.



<b>Ground floor area</b>	85.9m <sup>2</sup> excluding garage
<b>First floor area</b>	103.6m <sup>2</sup> excluding garage
<b>GIA</b>	189.5m <sup>2</sup> excluding garage
<b>Garage</b>	28.8m <sup>2</sup>

GROUP  
*Lomond*