

Riverside, Glenrothes

The Katrine, 3 Bedroom Semi Detached villa 107m²

GROUP
Lomond



The Katrine offers a welcoming entrance hallway with large coat/boot cupboard. Two separate entrance doors give access to the generous, open plan front-facing living room and rear facing Kitchen/Dining room. The kitchen is complete with modern fitted units, work surfaces, with integrated oven, hob, extractor hood, fridge, freezer, and dishwasher. Contemporary glazed door with side screen offering access into the rear garden.

Completing the ground floor living space is a modern fully tiled shower room plus two further useful storage cupboards, all of which can be accessed from the hallway.

To the first floor, there is a spacious landing which leads into three double bedrooms, all with fitted wardrobes. Large hall storage cupboard and Family bathroom which comprises of bath with separate shower cubicle, fully tiled with Porcelanosa tiles and completed by modern sanitaryware and chrome brassware.



Specification

- ✓ Choice of Kitchens
- ✓ Neff integrated kitchen appliances
- ✓ Fully tiled bathroom with choice of Porcelanosa tiles and separate shower
- ✓ Fitted wardrobes to all bedrooms.
- ✓ Oak internal doors
- ✓ Solar PV Panels

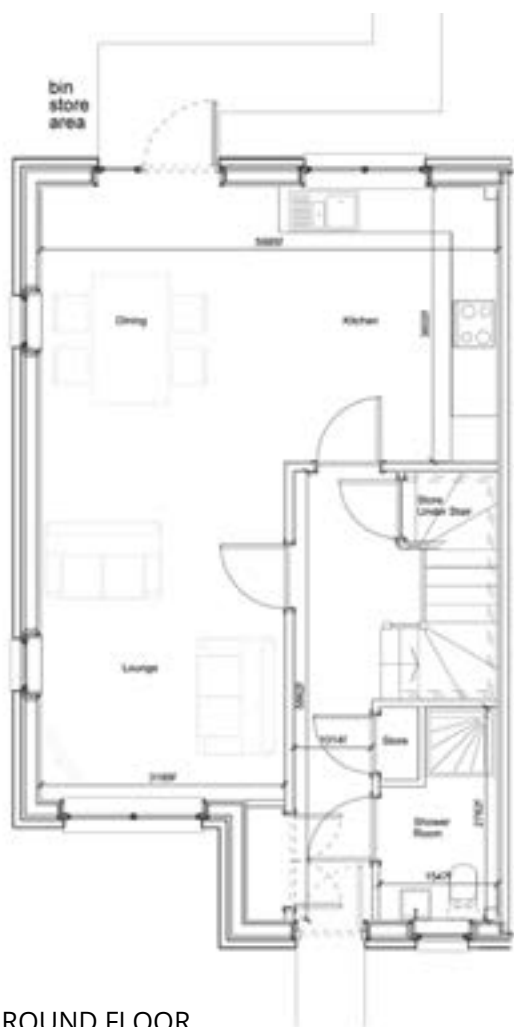
(updated 07/05/24)

Riverside, Glenrothes

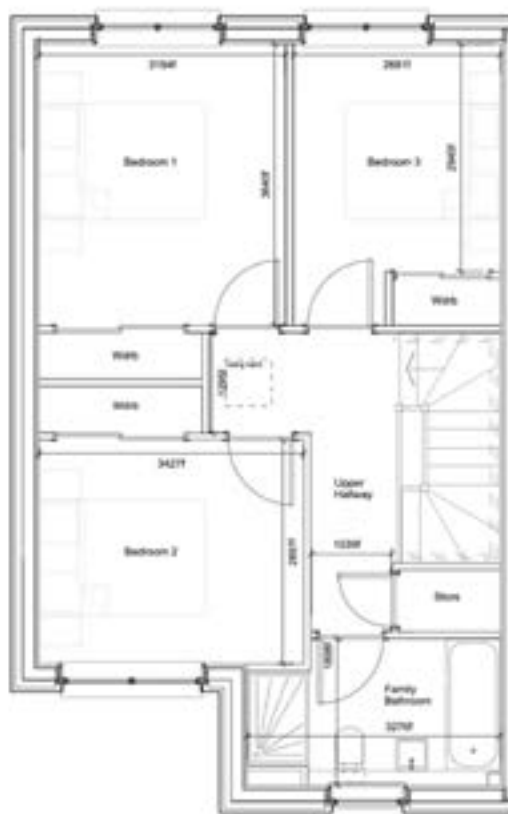
The Katrine, 3 Bedroom Semi Detached villa 107m²

GROUP

Lomond



GROUND FLOOR



FIRST FLOOR