

# Riverside, Glenrothes

The Rannoch Plot 11, 4 Bedroom Detached villa with integral garage 151m<sup>2</sup> plus garage 17.46m<sup>2</sup>

GROUP  
*Lomond*



The Rannoch offers a welcoming Vestibule with large coat/boot cupboard. A glazed door opens into the lower hall with access to the lounge at the front and kitchen at the rear. Access to the integral garage is also from the hall. A handy understairs storage cupboard is also offered.

The kitchen is complete with the choice of modern fitted units, work surfaces, with integrated oven, hob, extractor hood, fridge, freezer, and dishwasher. Contemporary glazed door with side screen offering access into the rear garden from the dining area. This large open plan living area is ideal for modern living. The Kitchen offers access to a utility room with spaces for appliances. Cloakroom/Wc with option to add a shower enclosure.

To the first floor, there is a spacious landing which leads into four double bedrooms, all with fitted wardrobes. Family bathroom which comprises of bath with separate shower cubicle. The master Bedroom offers an en-suite both these rooms offer

the choice of Porcelanosa tiles, completed by modern sanitaryware and chrome brassware. Large storage cupboard in hall.

## Specification

- ✓ Choice of kitchens
- ✓ Neff integrated kitchen appliances
- ✓ Fully tiled bathroom
- ✓ En-suite with choice of Porcelanosa tiles
- ✓ Fitted wardrobes to all bedrooms
- ✓ Electric garage doors
- ✓ Private driveway with integral garage
- ✓ Oak internal doors
- ✓ Solar PV Panels

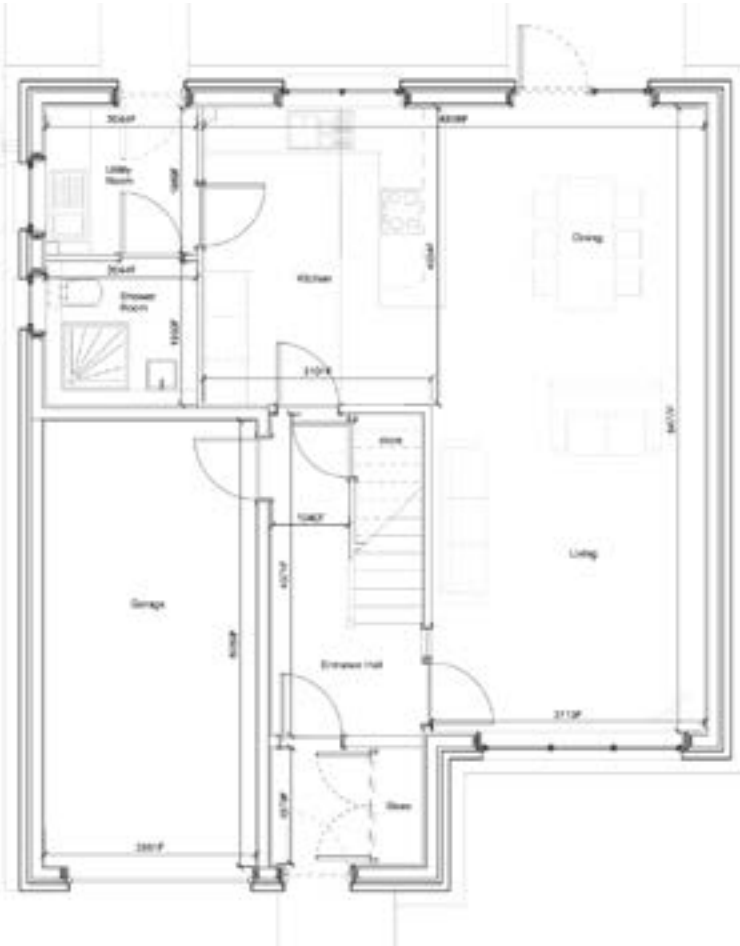
*(updated 07/05/24)*

# Riverside, Glenrothes

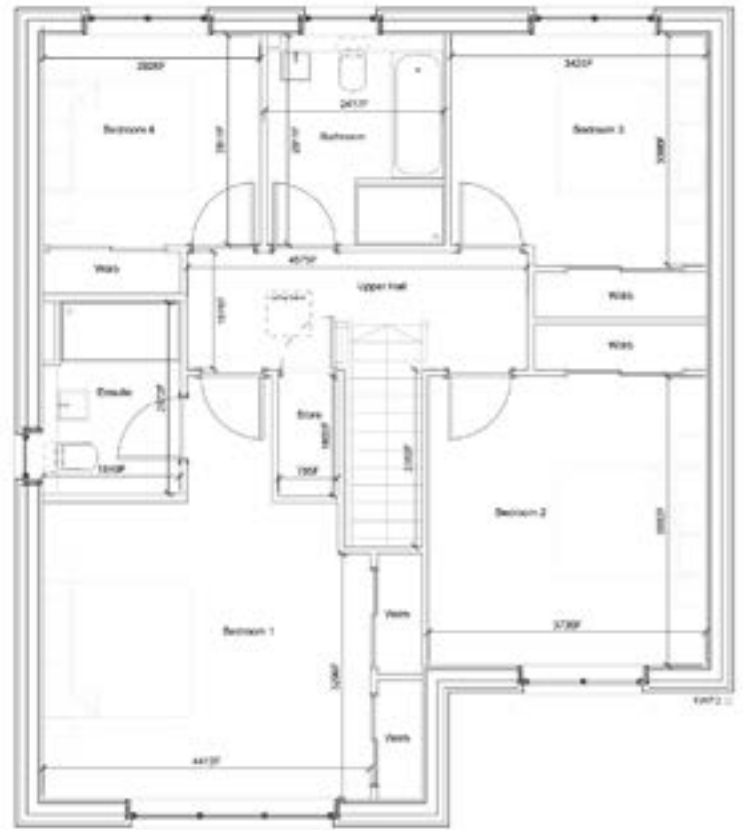
The Rannoch Plot 11, 4 Bedroom Detached villa  
with integral garage 151m<sup>2</sup> plus garage 17.46m<sup>2</sup>

GROUP

Lomond



GROUND FLOOR



FIRST FLOOR